

Dovato

(dolutegravir/lamivudine)

MEDICATION SWITCH

Dovato is indicated for the treatment of HIV-1 in adults and adolescents above 12 years of age weighing at least 40 kg, with no known or suspected resistance to the integrase inhibitor class, or lamivudine.

This leaflet has been designed to help you have the best start on Dovato and aims to answer any questions you may have. Dovato comes with its own Patient Information Leaflet included in the packaging. Make sure you read this carefully as it contains more detailed information.

Your medicine has been switched from



to **Dovato**

The reason you have switched is: *'Insert tick option'*

- To reduce any potential effects on your kidneys, bones and cholesterol
- To give you a more convenient option
- To reduce any potential drug interactions
- To simplify your medication
- Other _____



Dovato is a treatment for human immunodeficiency virus (HIV-1, or 'HIV') infection.



Dovato is a complete treatment regimen that has been prescribed to you by your doctor because they believe it's the best treatment for you.



Dovato is taken once a day, with or without food.



The most common side effects reported for Dovato are headache, diarrhoea and feeling sick (nausea).

HOW TO TAKE DOVATO

Dovato should be taken **once daily, ideally at the same time of day each day.**

Swallow your tablet **together with some water or juice.** Dovato can be taken **with or without food.**



WHAT TO DO IF YOU MISS A DOSE

If you do accidentally miss **one** dose of Dovato there is no need to panic.

If you are not due another dose in the next 4 hours, just take your tablet as soon **as you remember.** Speak to your pharmacist if you are unsure.

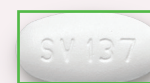
If you are due another dose of Dovato in the next 4 hours, simply **skip the missed dose and take your next dose at the regular time.**

If you continue to miss doses and are not sure what to do, **Speak to your doctor.**

Dovato is made up of two different medicines, called dolutegravir and lamivudine, combined in one tablet.

Each Dovato tablet looks like this:

Approx 9.5mm



Approx 18.5mm

50 mg dolutegravir
+
300 mg lamivudine

Do not take two doses at the same time to make up for a missed dose.



REMEMBERING TO TAKE DOVATO



Create a reminder: this could be an alarm, an app or a calendar alert on your phone.

Plan ahead: keep extra medicine with you at all times, in case you forget to take your dose, or in case of travel or a change in your routine.

Keep a diary: record when you have taken your medicine. You could also put a tick in a calendar.

Try keeping your medicine in a memorable, but safe, spot: for example, on your bedside table.

Make it routine: taking Dovato as part of your morning or bedtime routine can help you get into the habit of taking your medicine at the same time every day.

HOW TO STORE DOVATO

Dovato does not require any special storage conditions, but as with all medicines, you should **keep Dovato away from children and pets.**

Make sure you don't take your Dovato after the expiry date shown on the packaging. The **expiry date** refers to the last day of the month. For example, an expiry date of March 2021 would mean that your tablets expire on 31st March 2021.

THE POSSIBLE SIDE EFFECTS OF DOVATO

Like all medicines, Dovato may cause side effects. It's hard to know if you will have side effects or how long they will last if you do—it's different for everybody.

If you do experience side effects or symptoms, even those not listed in the Patient Information Leaflet, be sure to let your healthcare team know so they can help you to manage them.

The complete list of possible side effects is included in the Patient Information Leaflet that came with your medicine, but the **most common** ones (affecting more than 1 in 10 people) reported for Dovato are:

- diarrhoea
- feeling sick (nausea)
- headache

Other common side effects (affecting up to 1 in 10 people) reported for Dovato are:

- abnormal dreams
- anxiety
- being sick (vomiting)
- depression
- difficulty sleeping
- dizziness
- feeling sleepy
- hair loss
- itching
- joint pain
- lack of energy
- muscle pain
- rash
- stomach pains
- wind
- weight gain

If you experience signs of an **allergic reaction**, such as swelling of the face and mouth causing breathing difficulties, a skin rash or a high temperature, **see a doctor straight away.**

If you experience signs of an **infection**, such as a fever, headache, stomach ache or difficulty breathing, **see a doctor straight away.**

If you get any side effects, talk to your doctor, pharmacist or nurse. This includes any possible side effects not listed on this leaflet or in the product package leaflet.

You can also report side effects directly to HPRA Pharmacovigilance on their website: www.hpra.ie.

By reporting side effects, you can help provide more information on the safety of this medicine.



HELPFUL INFORMATION



My clinic is:

My clinic's contact number is:

My doctor's name is:

My emergency contact is:

My next appointments are:

Date	Time	With