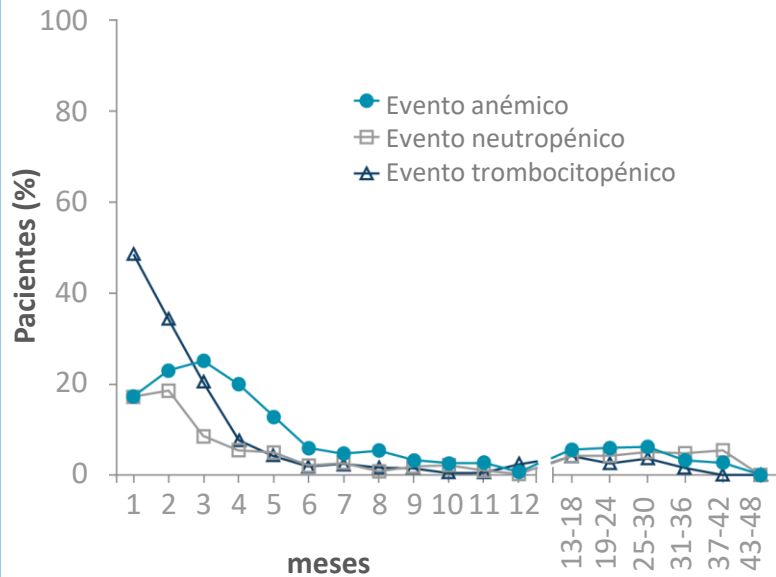
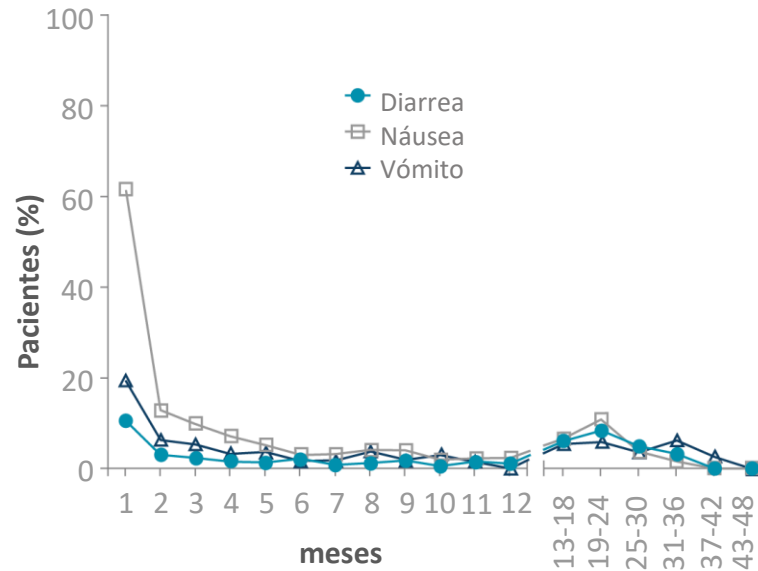


Niraparib, toxicidad hematológica



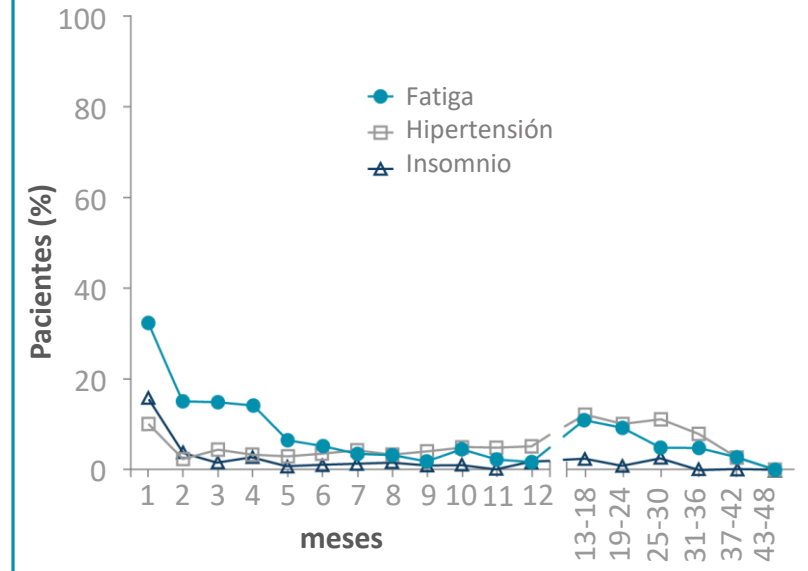
Nº de riesgo 367 367 342 332 307 286 258 243 217 202 183 177 165 119 81 63 37 13

Niraparib, cualquier evento gastrointestinal



Nº de riesgo 367 367 342 332 307 286 258 243 217 202 183 177 165 119 81 63 37 13

Niraparib, cualquier evento adverso sintomático



Nº de riesgo 367 367 342 332 307 286 258 243 217 202 183 177 165 119 81 63 37 13